



R200 Installation and Maintenance

MASTER PNEUMATIC - DETROIT, INC.

6701 -18 Mile Rd. | Sterling Heights, MI 48314 | Phone: (586) 254-1000 | Fax: (586) 254-6055 | Email: mp@masterpneumatic.com

PRODUCT NUMBERS:

R200-12
R200-16

THANK YOU!

You have just purchased a quality Externally Piloted Regulator from Master Pneumatic.

With care in its installation and maintenance, you can expect it to have a long and economical service life. Before you go any further, please take a few minutes to look over this information, then save it for future reference and for the useful service information it contains.

Installation & Operation Procedures

INSTALLATION:

1. Depressurize and lockout air pressure.
2. Upstream pipes must be free of dirt and liquids.
3. Filters should be installed immediately ahead of Regulators to insure a clean supply of air.
4. Install the R200 Regulator as near as possible to the device it is to serve.
5. Install the R200 Regulator so that air flows from inlet to outlet as shown on the head.
6. The R200 Regulator can be installed in any orientation.
7. The R200 Regulator requires a Control Regulator to operate. Available Control Regulators are R55M, R56M, R57M, R100, R380, IR100, IR380, or ER Servo Valve.
8. The Control Regulator can be installed at a distance from the R200 Regulator for easier adjustment. The R200 Regulator has two pilot ports on front and back of inlet side of head. Connect inlet of Control Regulator to one of the pilot ports, and install pipe plug into the other. Connect outlet port of Control Regulator to port on bottom of R200 Dome. See Figure 1.
9. The R200 Regulator has two gauge ports on front and back of outlet side of head. It is necessary to install a pressure gauge or pipe plugs into each port before operating.
10. Regulators should be installed upstream of any Lubricators in the airline.

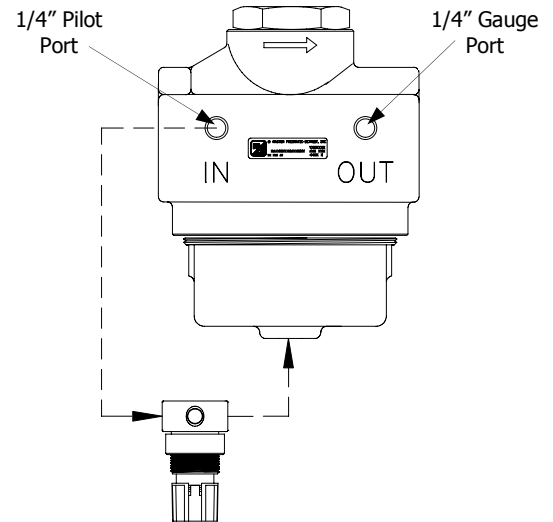


Figure 1.
R200 Shown with R56M Control Regulator

OPERATION:

1. Outlet pressure of R200 Regulator is dependent on the Control Regulator. To increase the R200 pressure, increase Control Regulator, or to decrease R200 pressure decrease Control Regulator. To adjust the Control Regulator, turn clockwise to increase pressure and counter-clockwise to decrease. For more details see specific Installation and Maintenance Sheet for chosen Control Regulator.
2. The Control Regulator pressure setting may need to be a few psi higher than desired pressure for outlet of R200 Regulator.

TO CLEAN OR REPAIR:

1. Depressurize and lockout air pressure.
2. Remove Dome by turning counter-clockwise.
3. Piston can now be removed.
4. Remove Cap by turning counter-clockwise.
5. Valve Spring and Valve can now be removed.
6. When re-assembling, be sure that all seals are correctly located. Torque Cap and Dome to 80-100 ft-lbs.
7. If the R200 cannot be repaired by cleaning with soap and water, the parts should be replaced.



R200 Installation and Maintenance

MASTER PNEUMATIC - DETROIT, INC.

6701 -18 Mile Rd. | Sterling Heights, MI 48314 | Phone: (586) 254-1000 | Fax: (586) 254-6055 | Email: mp@masterpneumatic.com

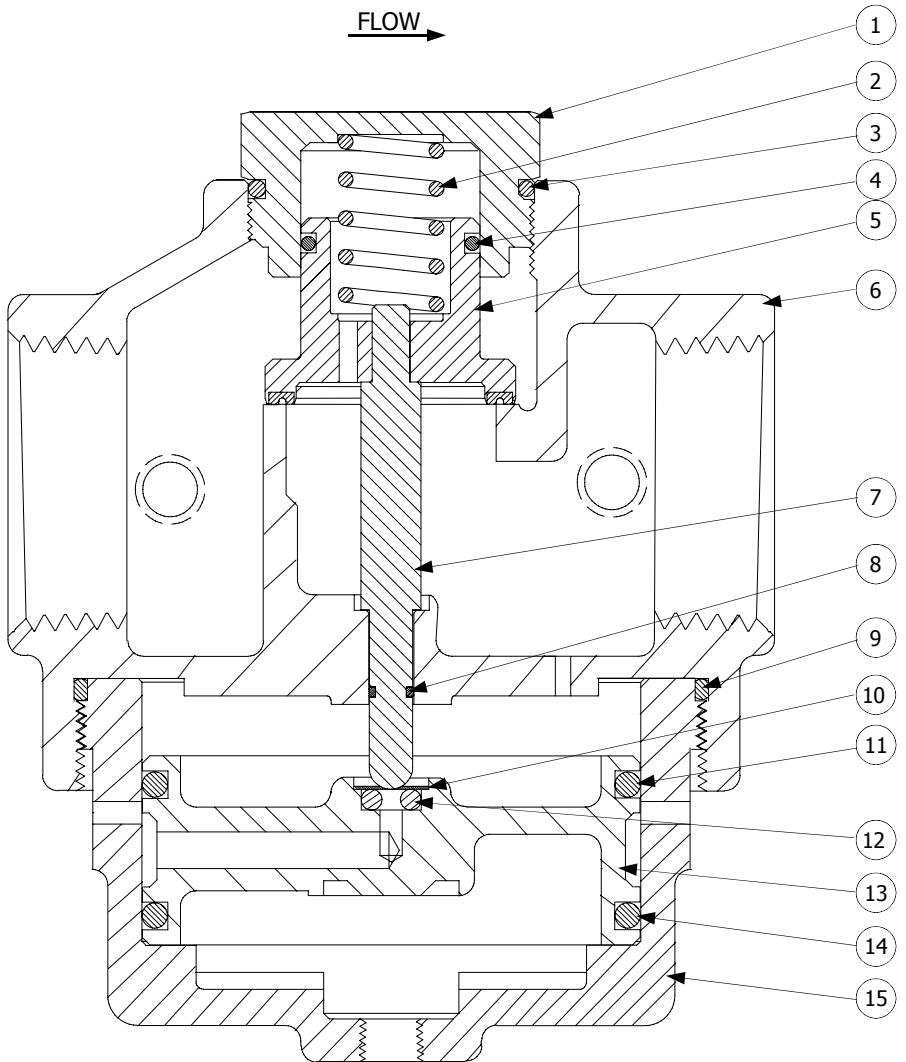
Replacement Parts

Replacement Parts

DESCRIPTION	PART NUMBER
O-Ring Kit <i>(Includes all 7)</i>	KAR200
Valve Assembly Kit	A37-89
Valve Assembly Kit - Viton	A37-89V
Piston Assembly Kit	A37-83
Piston Assembly Kit - Constant Bleed	A37-83Q

Parts Listing

KEY	DESCRIPTION
1	Cap
2	Valve Spring
3	O-Ring
4	O-Ring
5	Valve
6	Head
7	Valve Stem
8	O-Ring
9	O-Ring
10	Retaining Ring
11	O-Ring
12	O-Ring
13	Piston
14	O-Ring
15	Dome



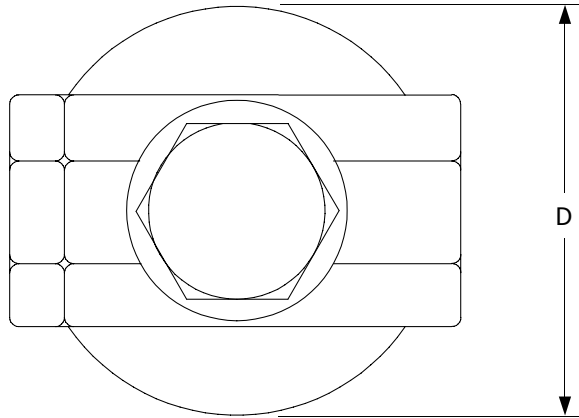


R200 Installation and Maintenance

MASTER PNEUMATIC - DETROIT, INC.

6701 -18 Mile Rd. | Sterling Heights, MI 48314 | Phone: (586) 254-1000 | Fax: (586) 254-6055 | Email: mp@masterpneumatic.com

Dimensional Specifications



KEY	DIMENSION
A	6.4" (162 mm)
B	3" (76 mm)
C	5" (127 mm)
D	5.8" (147 mm)

